

MONTHLY MEMBERSHIP PROGRESS REPORT

District 26 M1

Results as of: 3/31/2026

GMT:

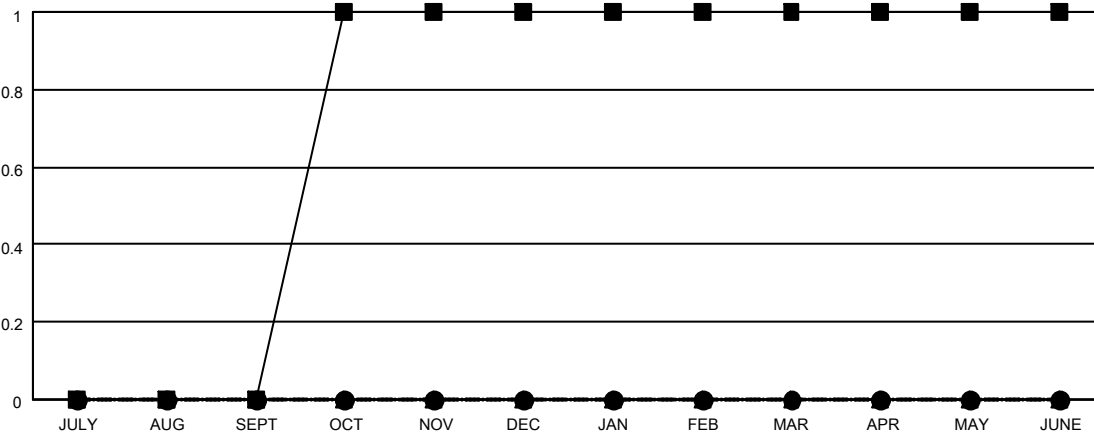
LOCATION MISSOURI

GMT CA

Clubs			
RESULTS FOR 2025-2026			
QUARTER	NEW CLUB GOAL	NEW CLUBS	DROPPED CLUBS
JULY/AUG/SEPT	0	0	1
OCT/NOV/DEC	1	0	0
JAN/FEB/MAR	0	0	1
APR/MAY/JUNE	0	0	0

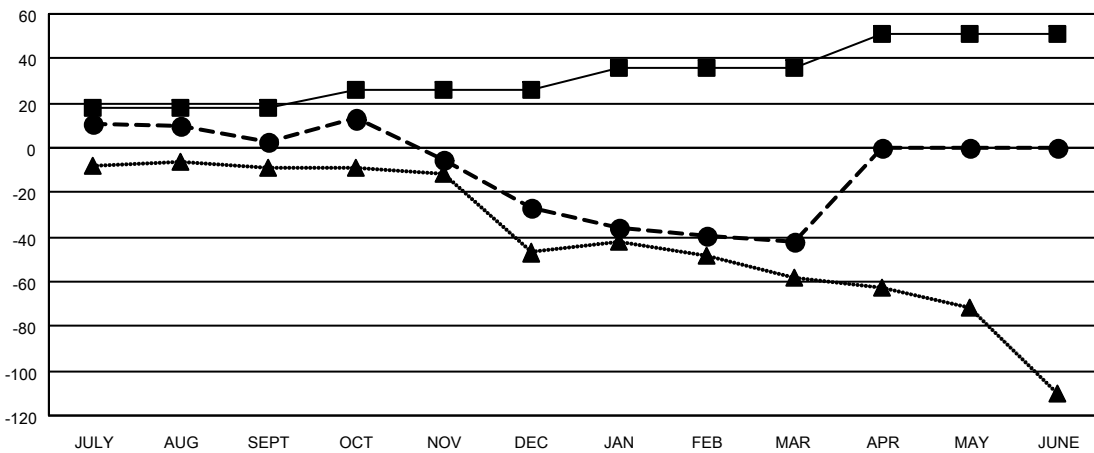
Members			
RESULTS FOR 2025-2026			
QUARTER	MEMBER GROWTH NET GOAL	MEMBER GROWTH ACTUAL	DROPPED MEMBERS ACTUAL (including transfers)
JULY/AUG/SEPT	18	62	17
OCT/NOV/DEC	8	32	59
JAN/FEB/MAR	10	16	29
APR/MAY/JUNE	15	0	0

GOALS AND ACTUAL NEW CLUBS CUMULATIVE



- - CURRENT YEAR GOALS FOR NEW CLUBS
- - CURRENT YEAR ACTUAL NEW CLUBS
- ▲ - LAST YEAR ACTUAL NEW CLUBS

GOALS AND ACTUAL MEMBERS CUMULATIVE



- - MEMBER GROWTH NET GOAL
- - MEMBER GROWTH ACTUAL
- ▲ - LAST YEAR MEMBERSHIP ACTUAL

DROPPED CLUBS: 2	13 CLUBS OF 34 ADDED 1 OR MORE NEW MEMBERS	GENDER DISTRIBUTION MALE 623 (72.61%) FEMALE 235 (27.39%)
DROPPED MEMBERS DECEASED 12 CLUB CANCELLED 0 OTHER 93 TOTAL 105	CLICK HERE FOR CUMULATIVE MEMBERSHIP DATA	TOTAL FAMILY UNIT MEMBERS 86 FAMILY MEMBERS PAYING HALF DUES 43